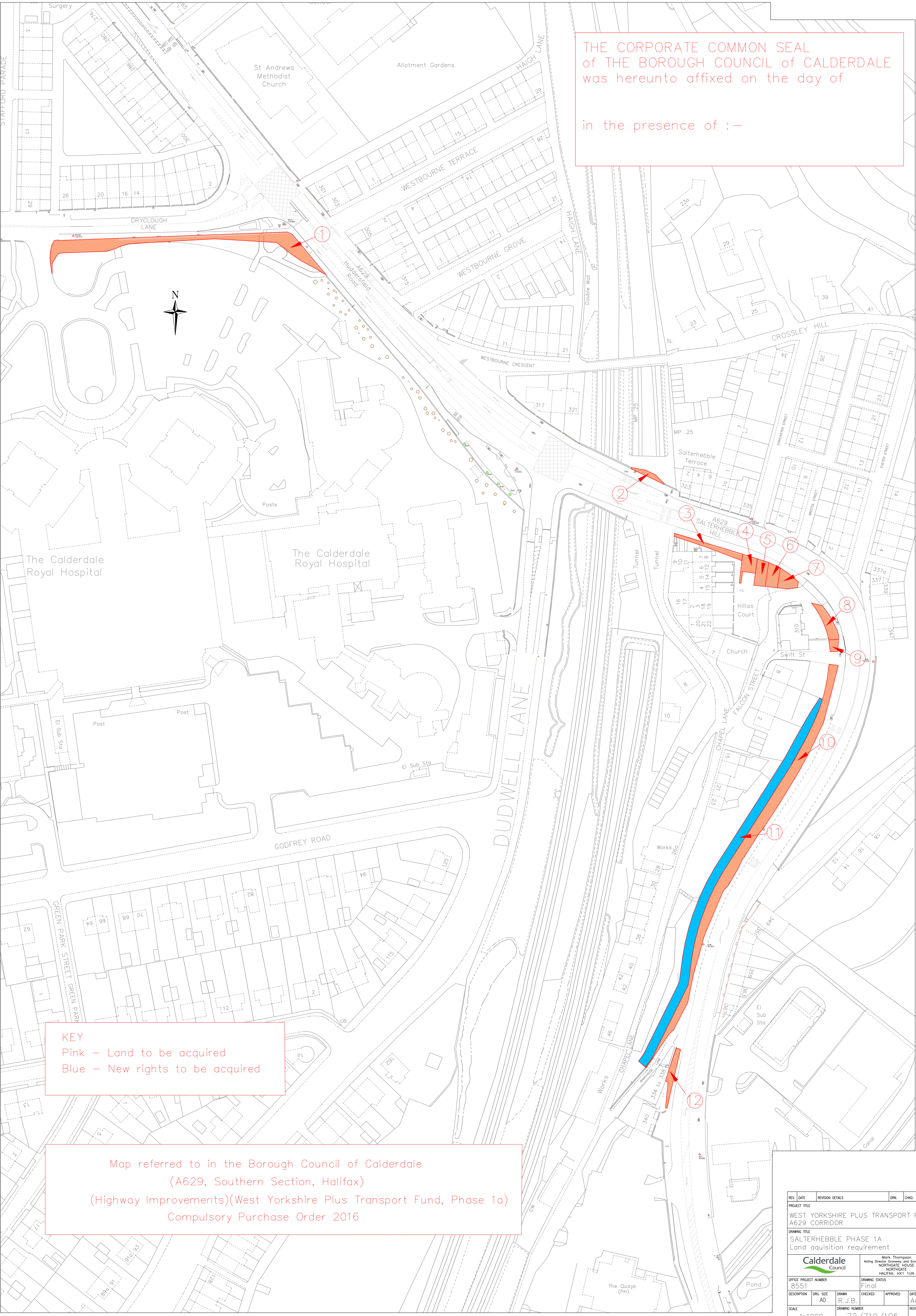


THE CORPORATE COMMON SEAL
of THE BOROUGH COUNCIL of CALDERDALE
was hereunto affixed on the day of

in the presence of :-



KEY
Pink - Land to be acquired
Blue - New rights to be acquired

Map referred to in the Borough Council of Calderdale
(A629, Southern Section, Halifax)
(Highway Improvements)(West Yorkshire Plus Transport Fund, Phase 1a)
Compulsory Purchase Order 2016

REV.	DATE	REVISION DETAILS	DRN.	CHKD.	APPRD.
PROJECT TITLE WEST YORKSHIRE PLUS TRANSPORT FUND A629 CORRIDOR					
DRAWING TITLE SALTERHEBBLE PHASE 1A Land acquisition requirement					
Calderdale Council Mark Thompson Acting Director Economy and Environment NORTHGATE HOUSE HALIFAX, WEST YORKSHIRE			DRAWING STATUS Final		
OFFICE PROJECT NUMBER 8551	DESCRIPTION A0	DRG. SIZE A0	DRWN. R.J.B.	CHECKED	APPROVED
SCALE 1:1000	DRAWING NUMBER 72/710/105		DATE Aug16	REVISION	